

MonoKey dongle

MonoKey dongle is a MonoKey unit connected to a computer and acts as a base station for the rest of the MonoKeys that takes a role as a wireless input device (WID). It should be connected with a A to mini B USB cable assembly. A MonoKey network consists of one MonoKey unit working as a dongle, and one or more MonoKey units working as wireless input devices. The dongle doesn't have a battery installed in it, and it has a label that says "dongle". Connect it to your computer's USB port with an A to mini B USB cable.

MonoKey Wireless Input Device (WID)

All MonoKey units that are not connected to a computer take a role as a wireless input device. They send user's input to MonoKey dongle wirelessly through radio signal. You can charge it by connecting it to a USB charger with a USB A to mini B USB cable assembly. A MonoKey network consists of one MonoKey unit working as a dongle, and one or more MonoKey units working as wireless input devices. A MonoKey wireless input device always has a battery installed in it.

Configuring a MonoKey

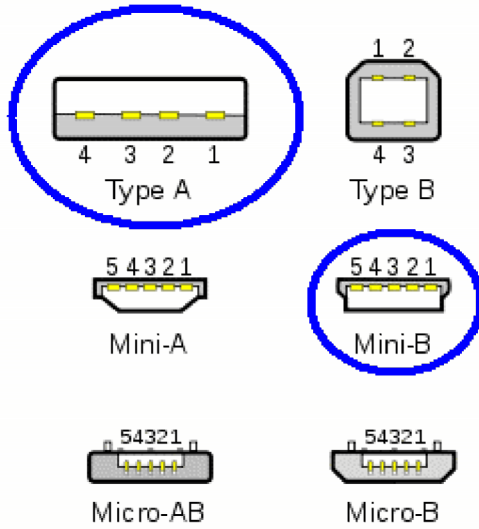
Unless you own more than one sets of MonoKeys, reconfiguring your MonoKeys is generally not required, since all MonoKey units are pre-configured to work together.

Reconfiguring a MonoKey unit can be accomplished through the dongle, or directly through a USB connection.

We have developed a software application to accomplish this task. The latest version of the software can be downloaded from our website, www.Acella.Org.

A to mini B USB cable

This USB cable can easily be found at computer stores. It is usually used to connect digital cameras to a computer.



Introduction to MonoKey

MonoKey is a wireless input device developed specifically for children who still can't use regular computer input devices such as a computer keyboard, mouse, or trackball. One MonoKey should be connected as a wireless dongle, while the others take a role as wireless input devices (WIDs), sending input from a user to the computer through the dongle. The dongle requires installation before it can be used. Reconfiguration is usually not required unless you own more than one MonoKey sets, since all units within a package are already pre-configured. Please visit our website, www.Acella.Org for more information. Virtual pet 1.0 is MonoKey compatible.





Installing MonoKey on a Windows-XP system

The step by step installation guide below is applicable in most systems running Windows XP.

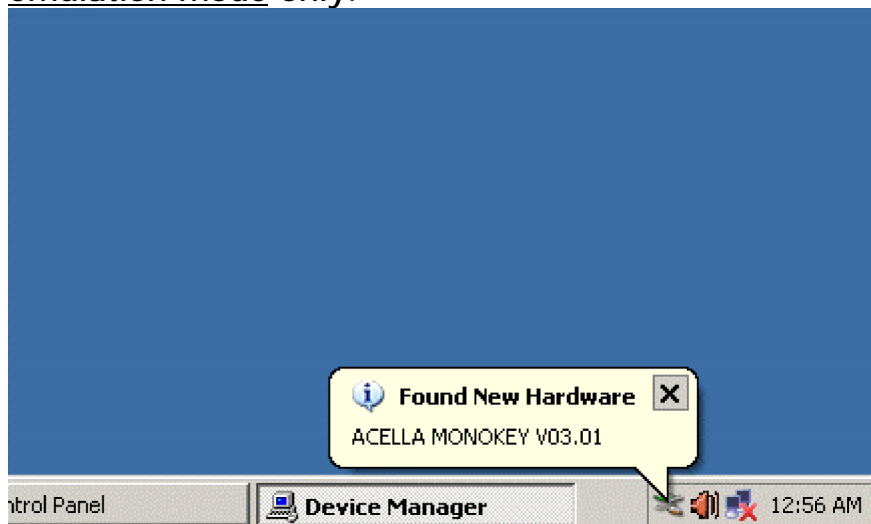
Driver installation is not required to use MonoKey to play VirtualPet, since it can also uses MonoKey in keyboard emulation mode, which doesn't require the driver to be installed.

However, with the driver installed, you can configure MonoKey which may be essential if you have one more than one set of MonoKey units. Additionally, in the near future, MonoKey will include attachments that may require the driver to be installed properly.

Therefore, you may skip this part altogether if you only have one set of MonoKey units.

When you plug the MonoKey to your computer's USB port for the first try, the computer will display the message that it has *found a new hardware*, then automatically run *found new hardware wizard*. When Windows asks if it should connect to Windows update, click *"No, not at this time"*.

Next, you may want to install the appropriate driver for MonoKey dongle. Unless you are planning to use MonoKey's keyboard emulation mode only.



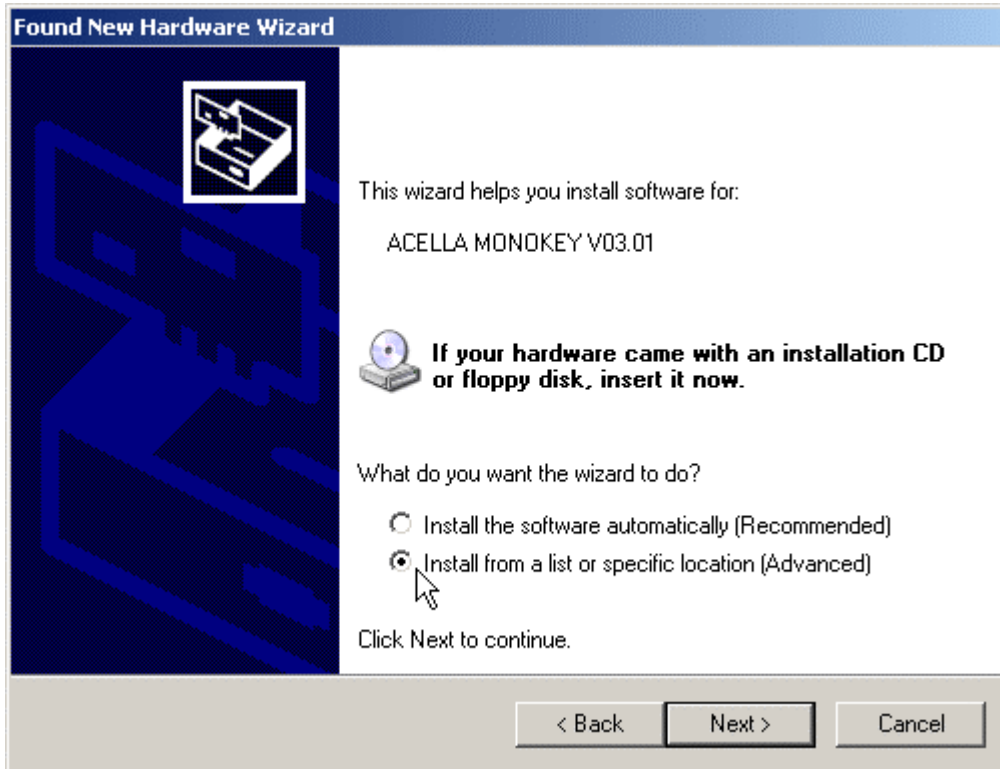
Windows found a new hardware



Windows run found new hardware wizard

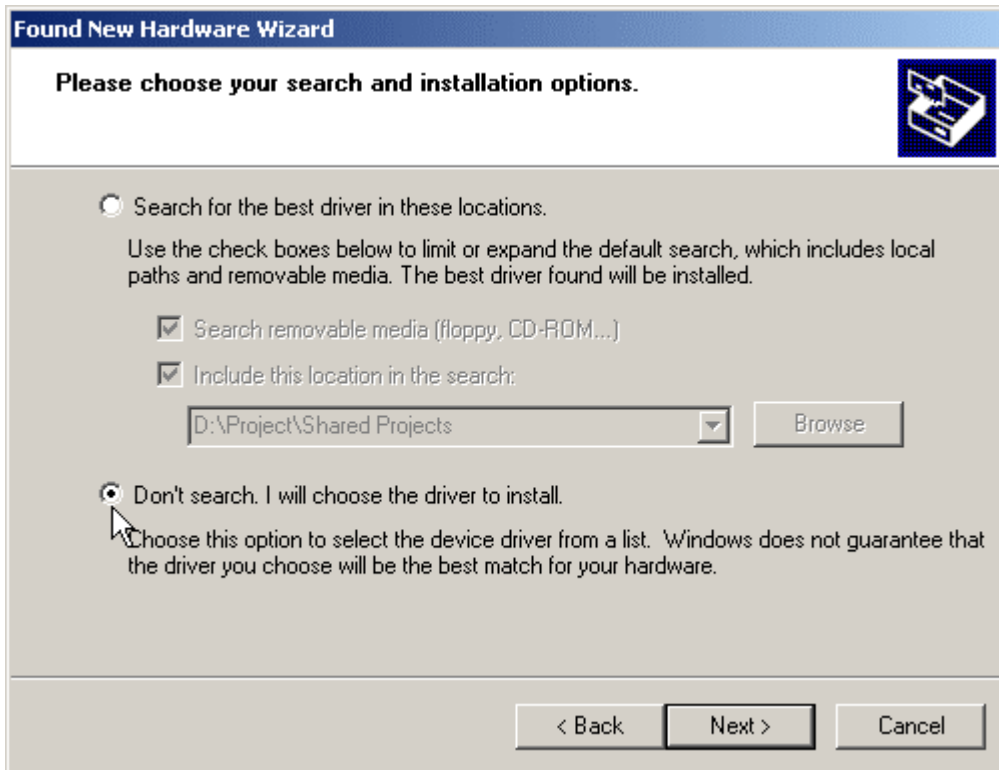
Installing MonoKey driver

When the next window appears, click *“Install from a list or a specific device (advanced)”*, then click *“next”*.



Choose to install from a specific location (advanced)

Choose *“Don't search I will choose the driver to install”*, then click *“next”*.



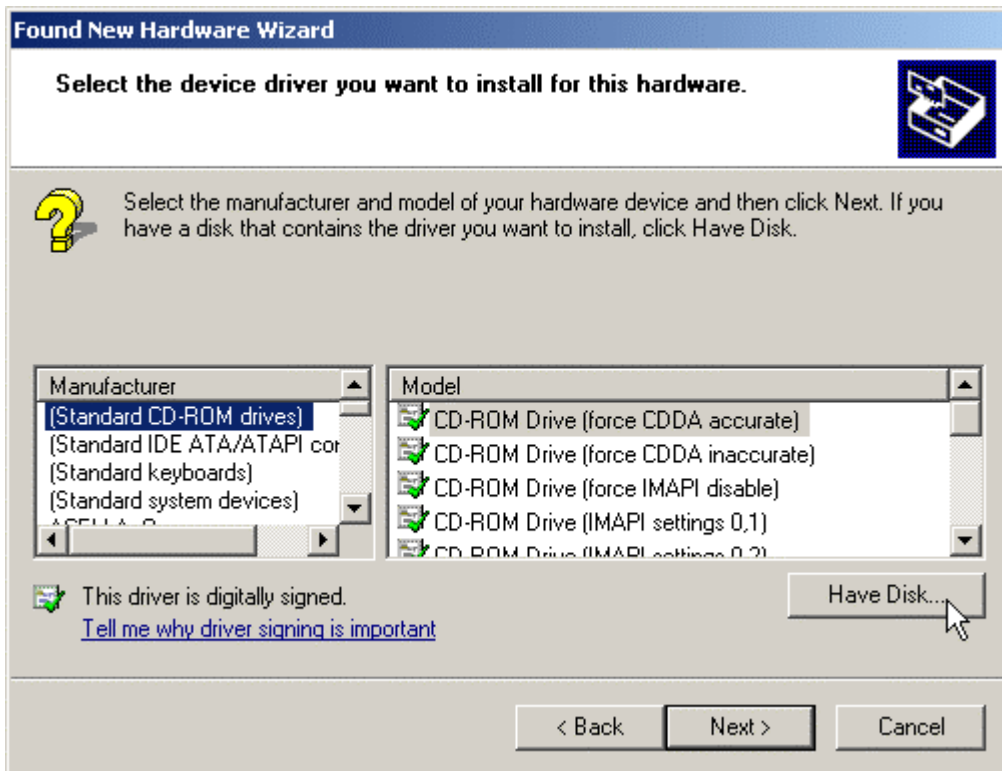
Choose to choose the drive to install

Choose "Show all devices", then click "next".



Choose to show all devices

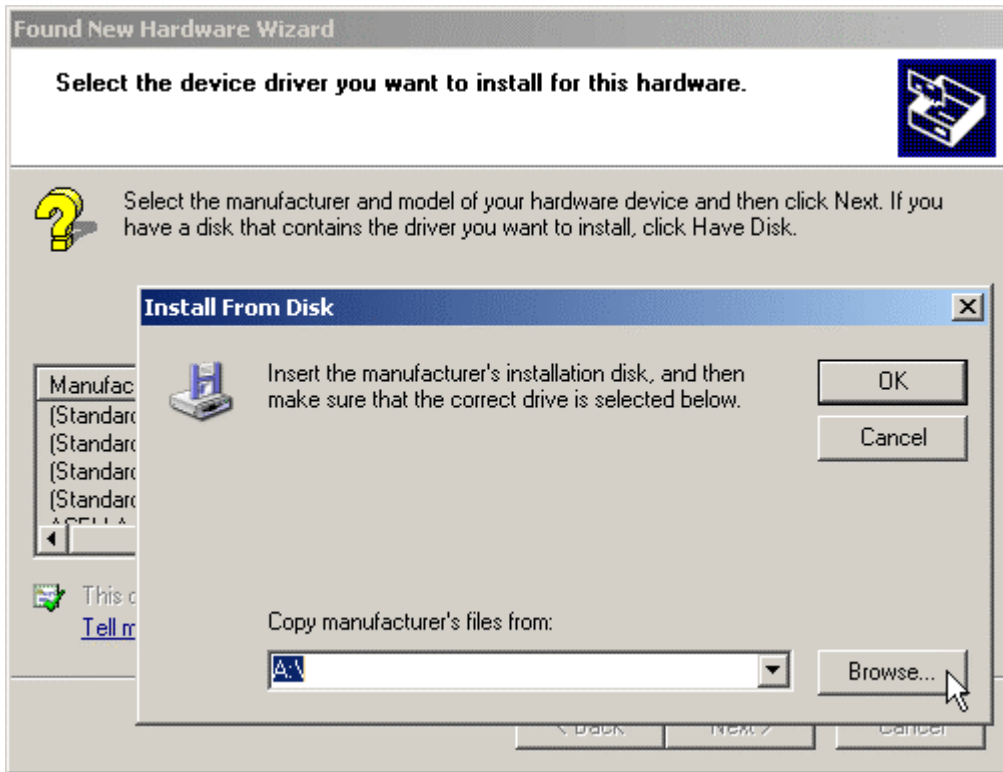
When the next window appear, click *"Have disk..."*.



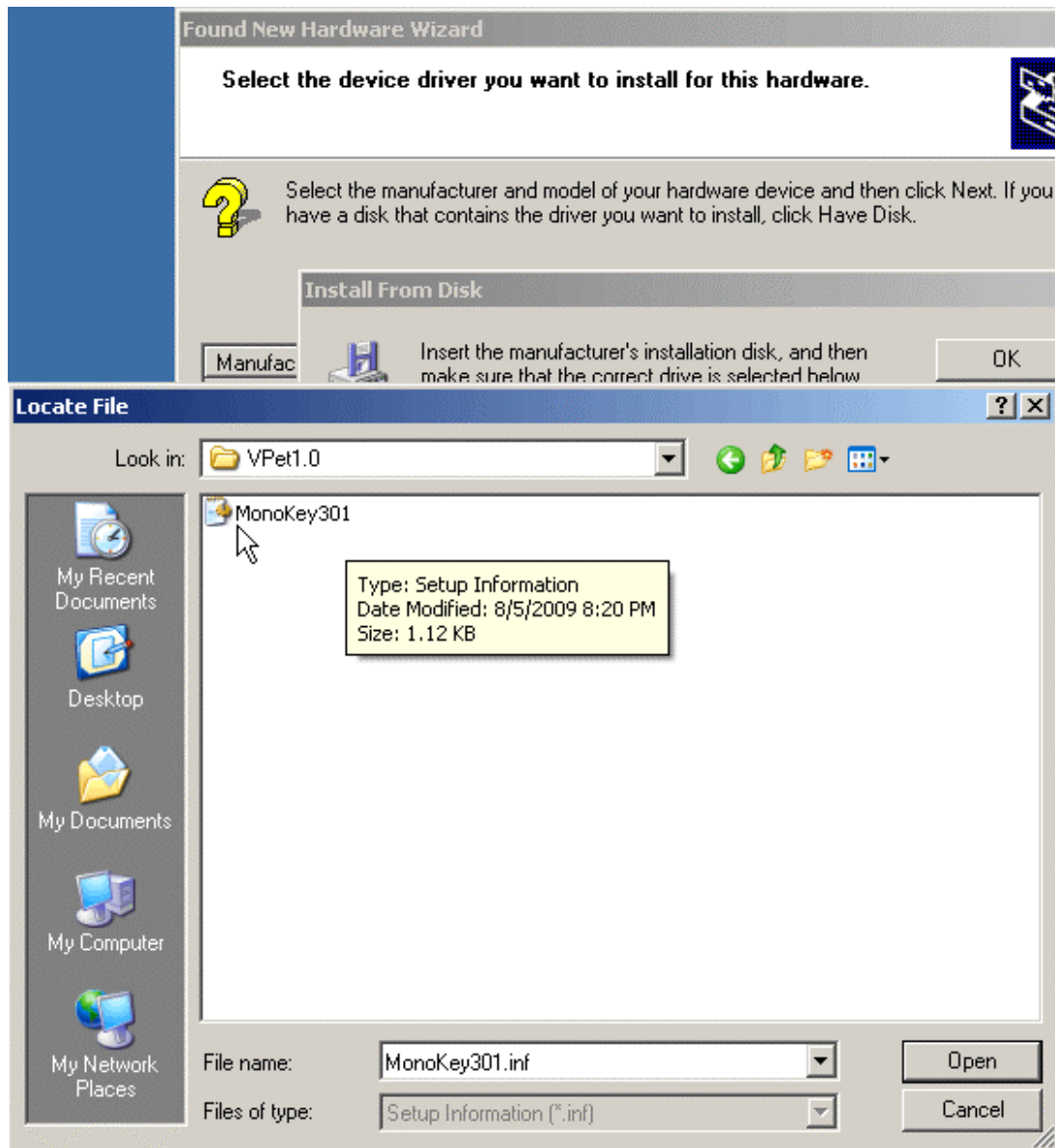
Choose to install from a disk

When the next window appear, click *"browse"*, then locate *MonoKey301.inf*.

We have included the .inf in Virtual pet's directory for your convenience.

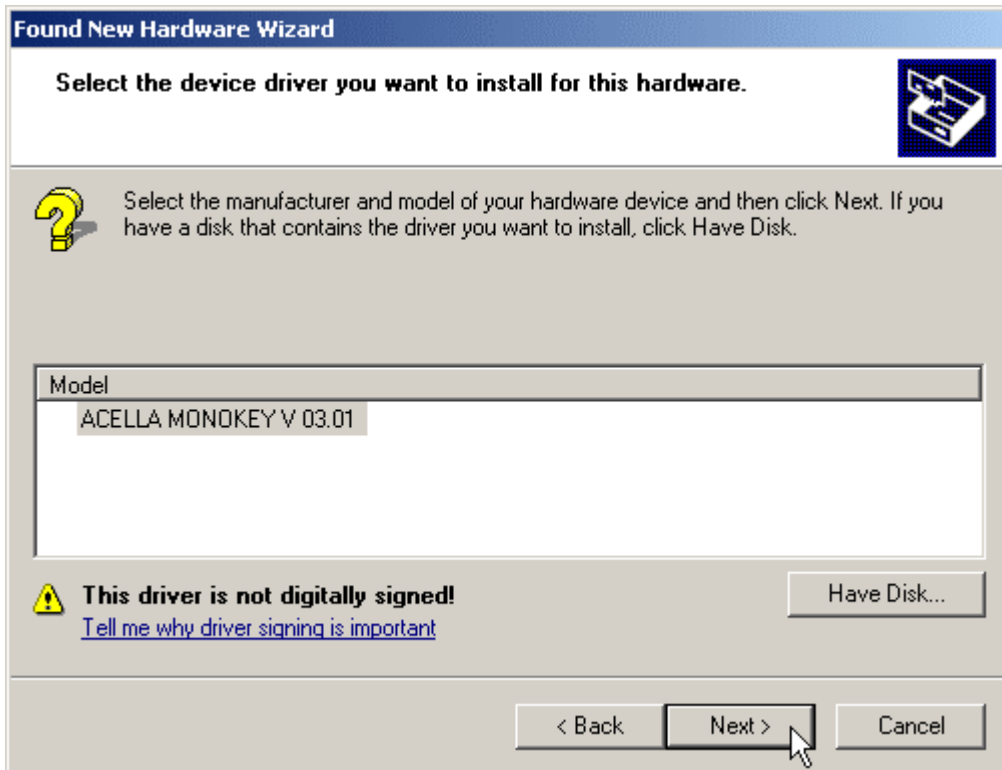


Browse the computer



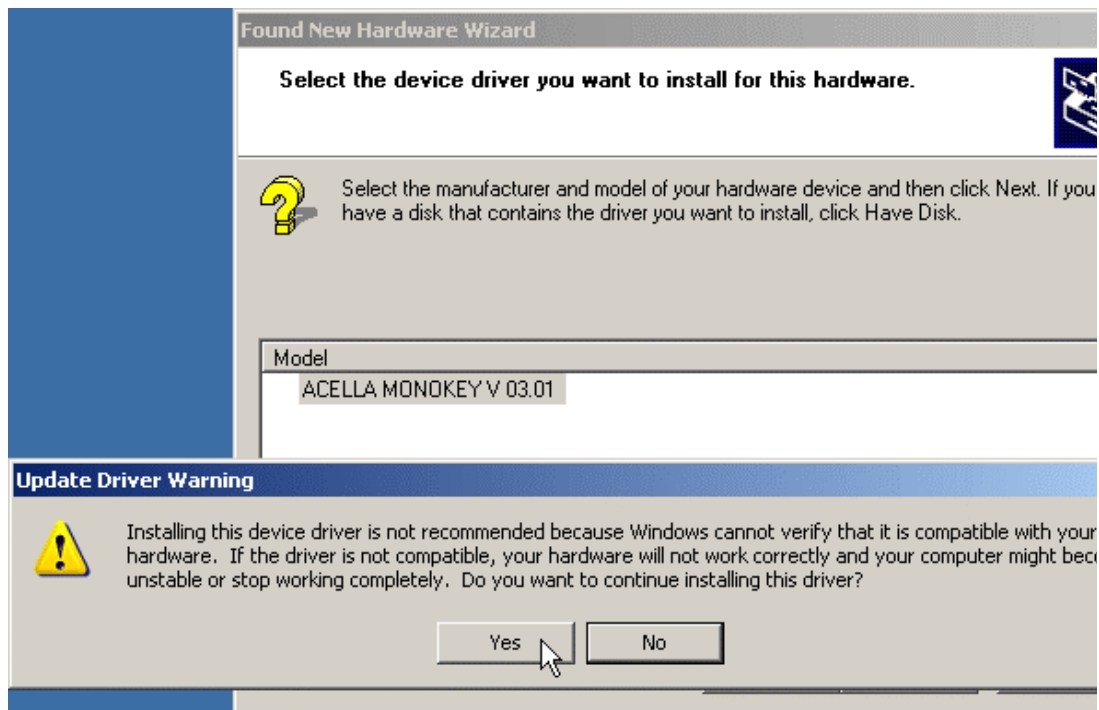
Locate MonoKey301.inf

After you open the .inf file, the following window should appear. Choose ACELLA MONOKEY V03.01, then click next.



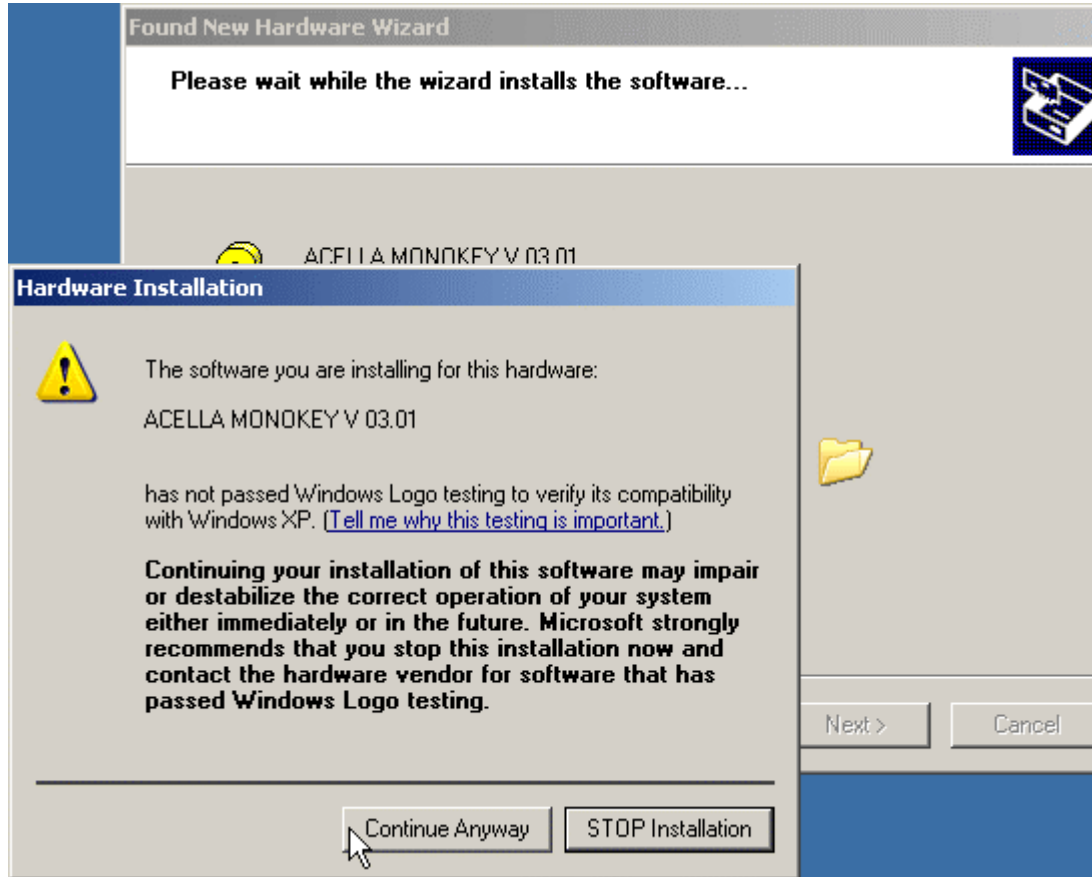
Choose to install ACELLA MONOKEY V 0301

Windows may say that it can't verify the compatibility of the device and asks if you want to continue. Click "yes".



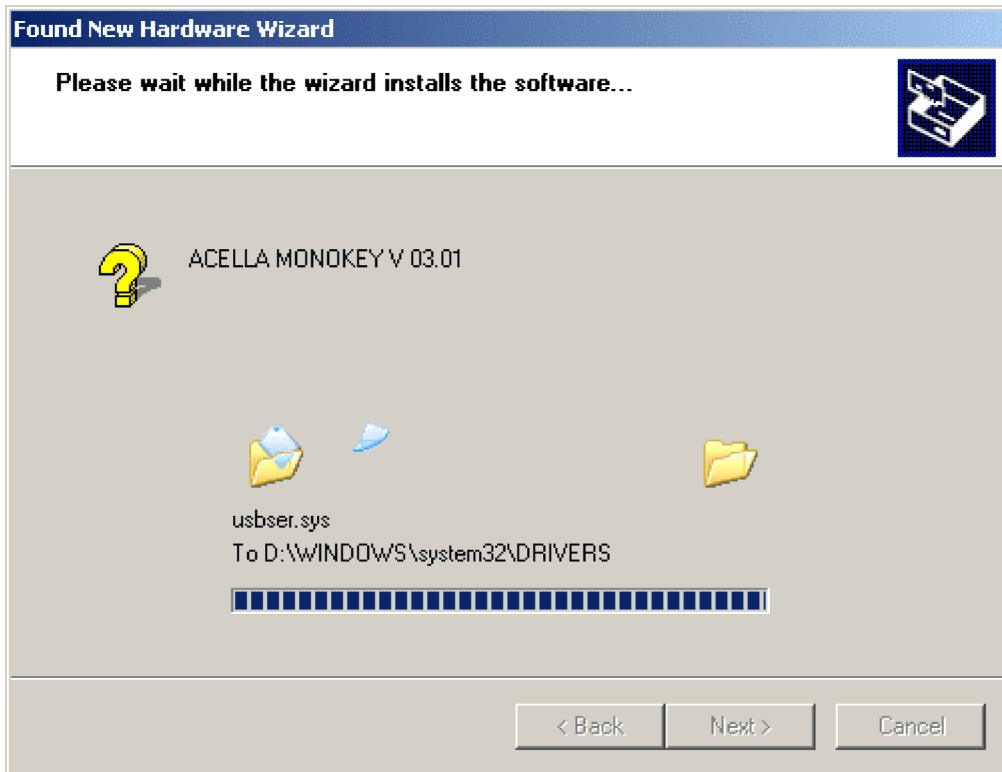
Confirm the installation

Windows may warn you that the software you are installing for the hardware has not passed Windows logo testing. Click “*continue anyway*”.



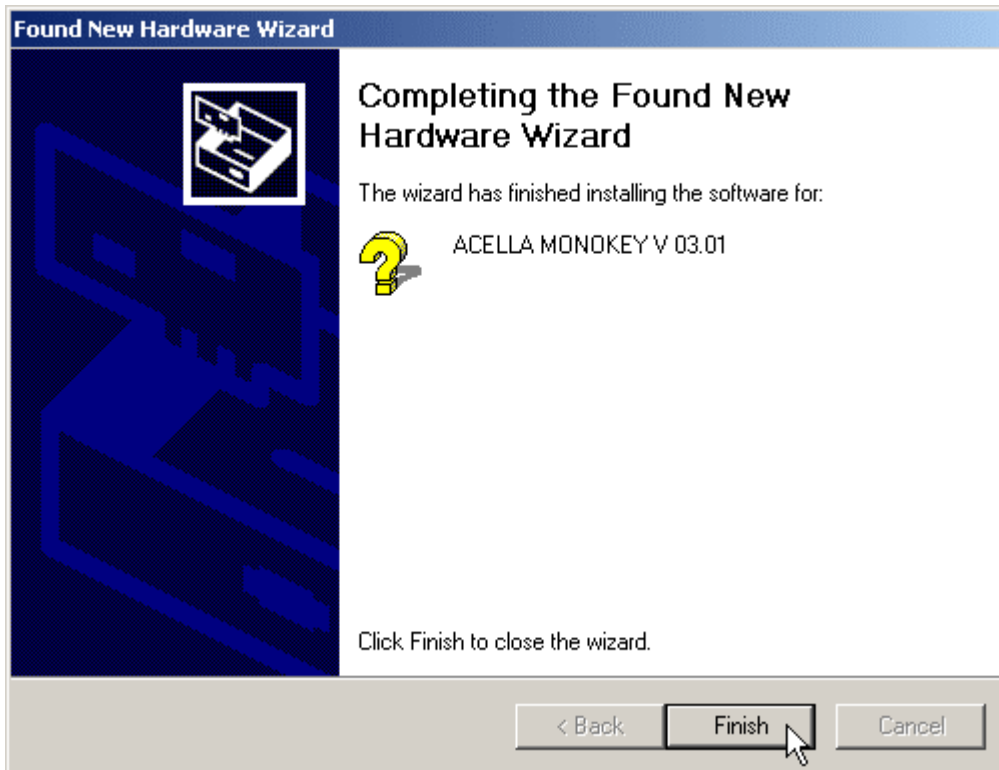
Choose to continue the installation

Wait until Windows finishes the installation process.



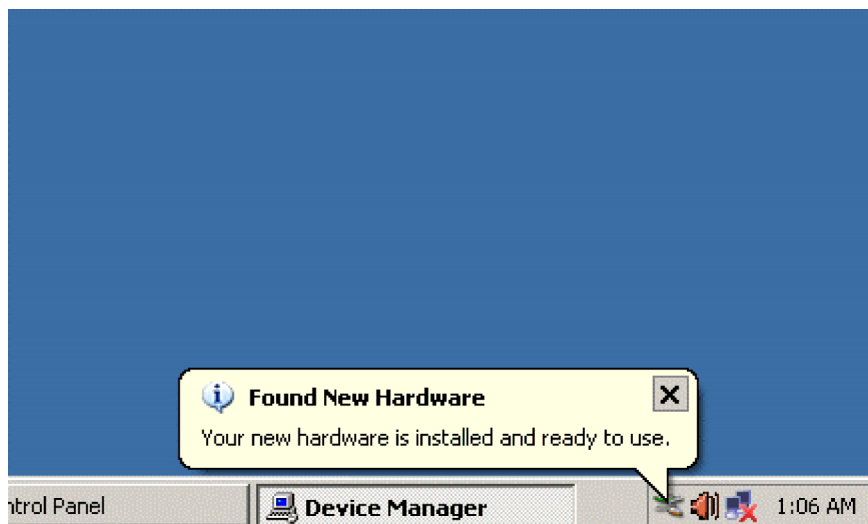
Wait until the installation is complete

The next window should inform you that the wizard has finished installing the software. Click *finish*.



Finish the installation

Windows should recognize the dongle immediately, which means your MonoKey system is fully operational. You may want to wait for a few seconds for the device to start.



Installation is complete

